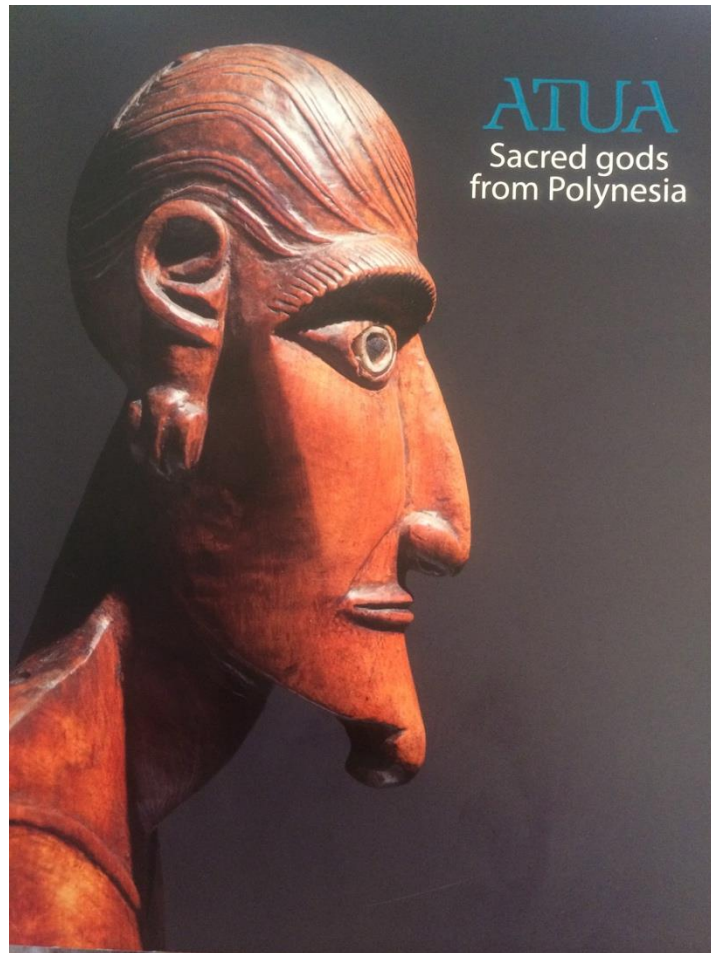


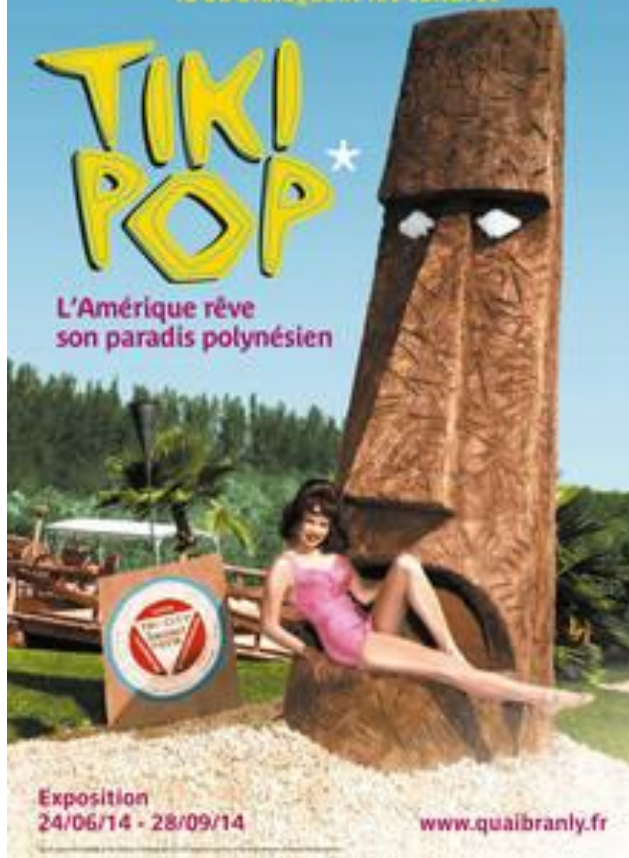
The mobility of Tiki in the Architecture and Changing Cultural Landscape of Pacific Oceania after 1776



★ MUSÉE DU QUAI BRANLY
là où dialoguent les cultures

TIKI POP ★

L'Amérique rêve
son paradis polynésien



Exposition
24/06/14 - 28/09/14

www.quaibranly.fr



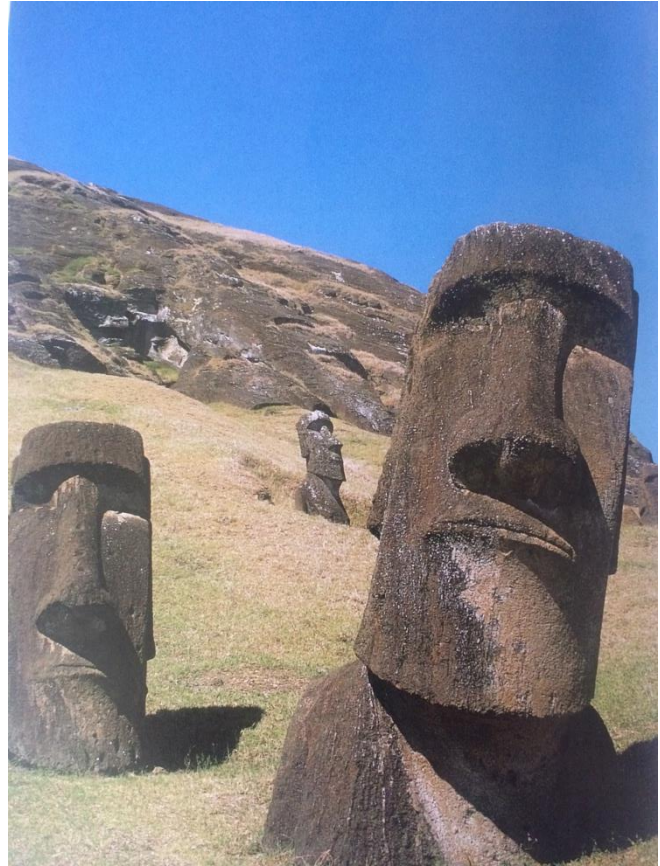
Tiki Oasis 14

San Diego, August 14-17, 2014

BEAT *TIKI

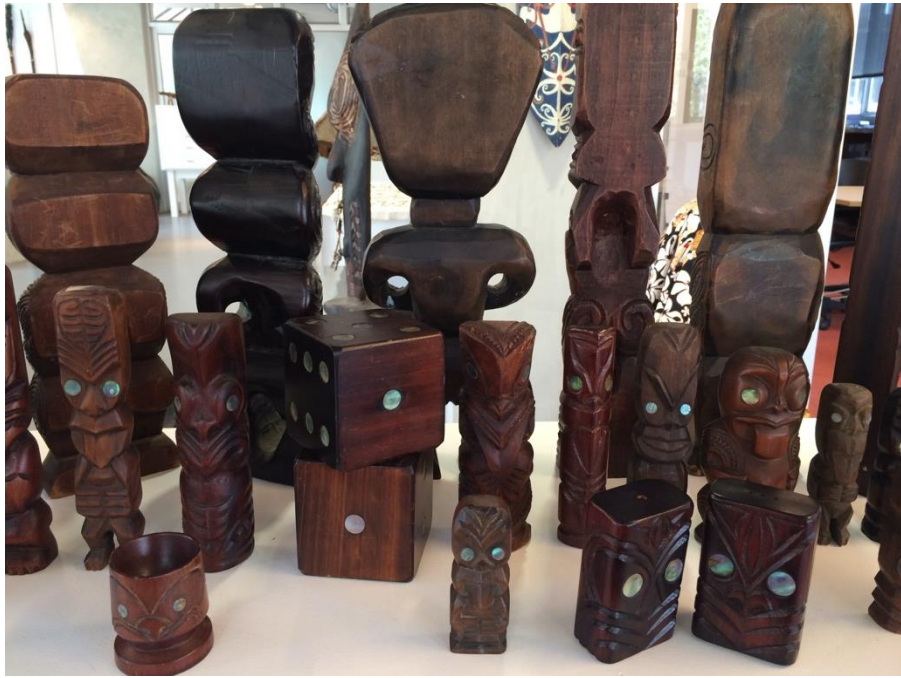
"Dig that Crazy Scene!"





Turning frowns upsidedown: Tiki's threatening and defiant posture, once depicted in grotesque humanoid form, has often been subverted to appear benign and welcoming.







Boats made landfall and became the first shelters



1. Gable peak figures (tekoteko)



2. House posts

(17th century wood house post, Solomon Islands 2110mm high x 300mm x 360mm)



3. House panels (interior and exterior)



4. Canoe prows



5. Gateways, fences or boundary markers



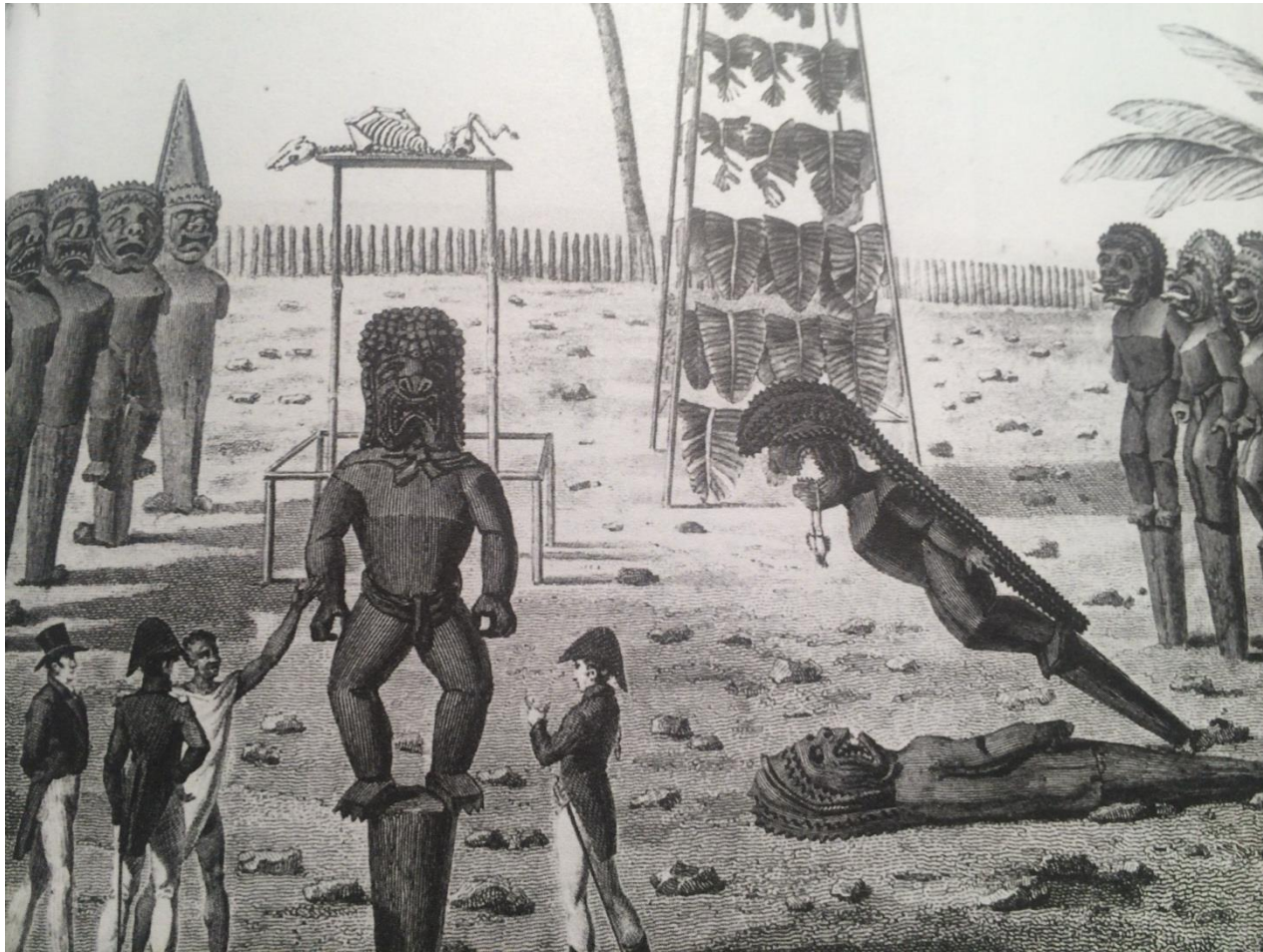
6. Freestanding



souvenir slit gong carvings from Vanuatu



monumental temple figures of Hawaii



fish offerings



Conventional Tiki posture: flexed legs and the hands clasped on the abdomen



